



ECCO ALU
ECCO STEEL
ECCO SAFETY
ECCO SCHUTZBANK
ECCO LIGHTBODY

Individual vehicle components are our
STRENGTH.



...the **LIGHTEST** of its kind!



Transport safely...

All products are certified
for timber transport.



Use our competent consulting, quality, precision and years of experience. We take time for you and your individual tasks and guarantee a high quality execution of all products.

ECCO ALU

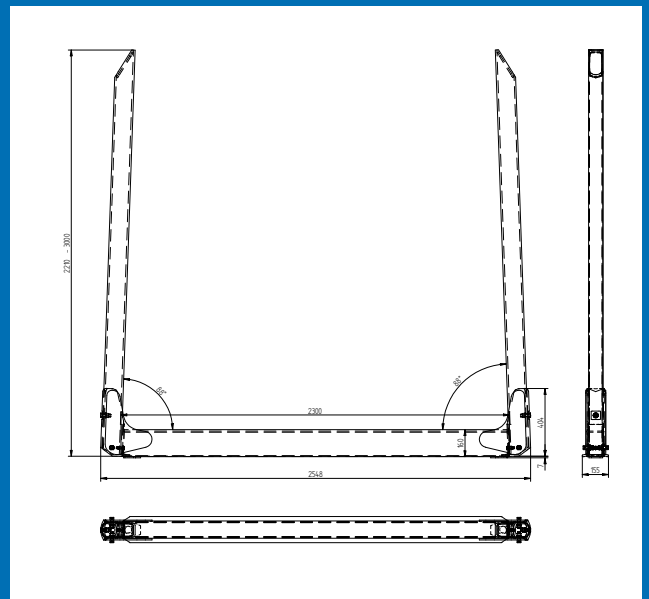


ECCO ALU 4, 7 and 9 series

ECCO ALU bunks with stakes type 4, 7 or 9 tons. The new ECCO ALU series has been developed from more than 20 years of experience in the transport of round timber. The lightest and most stable series of its kind! Developed in the sense of timber transporters!



Technical specifications



The **ECCO ALU** bunks and stakes in fixed and telescopic length. ECCO fixed stakes (sloping inside and outside) in lengths of 2200-2800mm freely selectable.



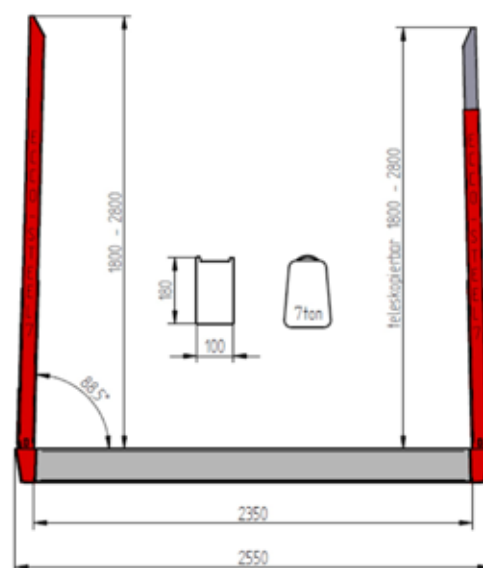
ECCO STEEL 7



ECCO STEEL 7/9 t

ECCO STEEL stake automatically lockable or with screw fastenings. Steel stake with aluminum telescope and a maximum loading capacity of max. 9 tons per stake pair. The basic height of the stake is from top edge welding bag to upper edge stake with telescope totally inserted 1,820mm. The max. loading height is infinitely adjustable with ECCO-fixation.

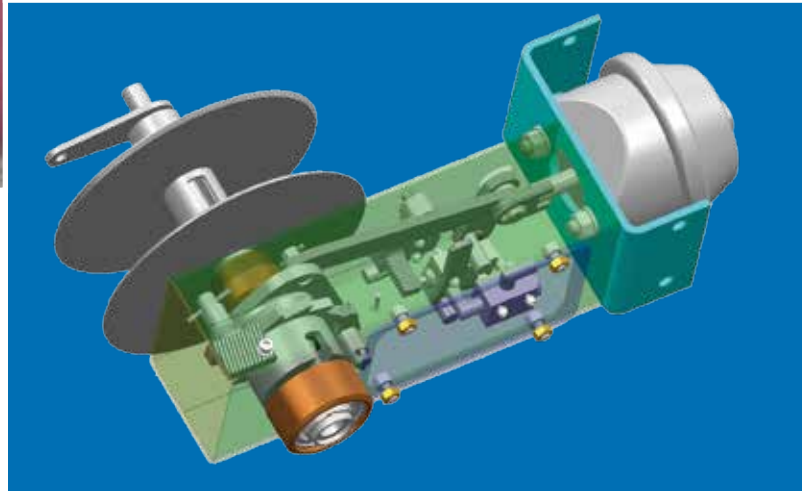
Technical specifications



ECCO (7 tones,) Steel bunk, outer bright 2550mm. The max. loading capacity per bunk is 7 tons. Delivery condition: steel, sandblasted, protected against frost or KTL + powder coated. The stakes stand. The stakes are almost perpendicular to the bunk. Preload 1.5 degrees, i. Angle 88.5 degrees.



Die **ECCO** SAFE jig will be delivered with a stainless steel case, holder for frame or bunk mounting, valves, plastic bushing for the frame, 10m strap with belt and opposing quick-fix and unlocking mechanism. The function is activated by air supply from the truck compressor.



Advantages of our jig:

- Low construction (about 120mm high)
- Low maintenance
- Left and right versions
- Stainless steel
- short delivery time due stock
- low acquisition cost
- certification (Dekra-expert opinions)



ECCO SCHUTZBANK

The **ECCO** SCHUTZBANK is made of canted, fine grain steel welted together with each other. On the bottom is a bended stiffing sheet with wide support and integrated slot mounted.

In order to mount the Schutzbank as firmly as possible, an anti-slip-mat is mounted in the area of the support and then fixed with a twist-proof fastening.

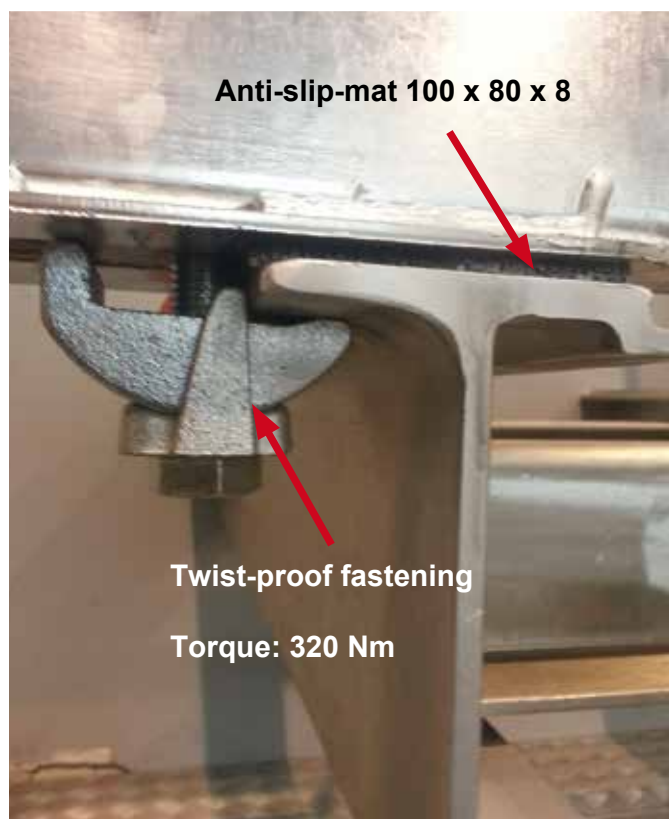
The Schutzbank will be delivered in:

- galvanized version



or in:

- KTL + powder coating
in RAL colors of your choice



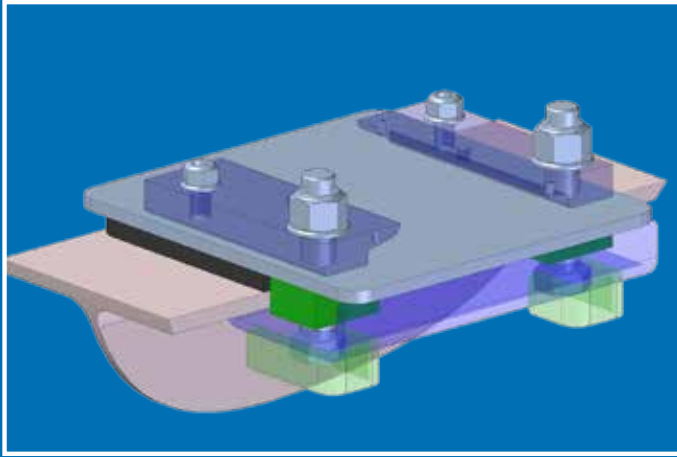
ECCO LIGHTBODY

The advantages:

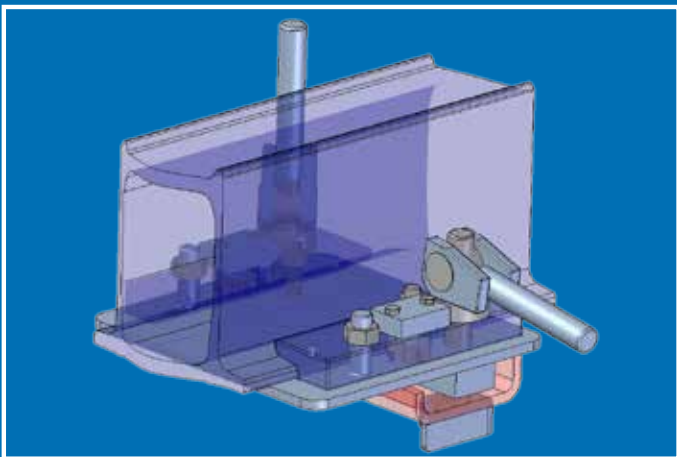
- low weight
- short assembly time
- Aluminum sub frame
- short delivery time during stock
- low acquisition costs

The **ECCO LIGHTBODY** is a frame construction in extreme lightweight construction with cross braces for optimum loadability.





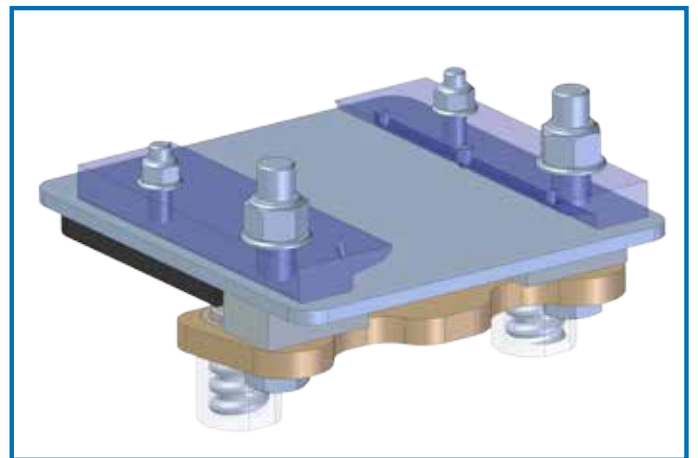
The **ECCO-resistance fastenings** are specially developed to move them manually with the crane loader on the sub frame. The fastenings can be used on all types of vehicle where the bunks are to be moved in the unloaded condition on the frame. The ECCO resistance fastenings are Self-locking by spring force.



ECCO Fastenings

The **ECCO fixed fastenings** are used, when the bunks are remain positioned mostly at the same place on the frame.

The Clamp-fastening are constructed especially for the ECCO Aluminum bunk.



The **ECCO-Quick fastenings** are used when the bunk has to be positioned at different points on the vehicle frame, for example because of different wood lengths.

safety first!!!

YOUR

safety comes

FIRST!

...more informations?

www.jw-tec.de

JW-Tec - your partner for individual solutions..

We are here for you! From planning to realization and also after delivery.

Ask us - we will be at your disposal for your technical requirements concerning transport.

 **JW-Tec** GmbH
Technik für das Transportwesen
D-49699 Lindern Riehendamm 35
Tel.: 05957/96 6660 Fax: 96 666 29
info@jw-tec.de www.jw-tec.de