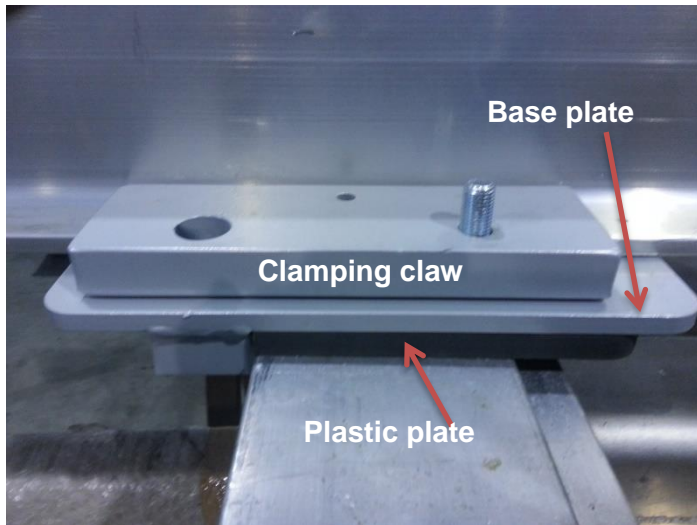
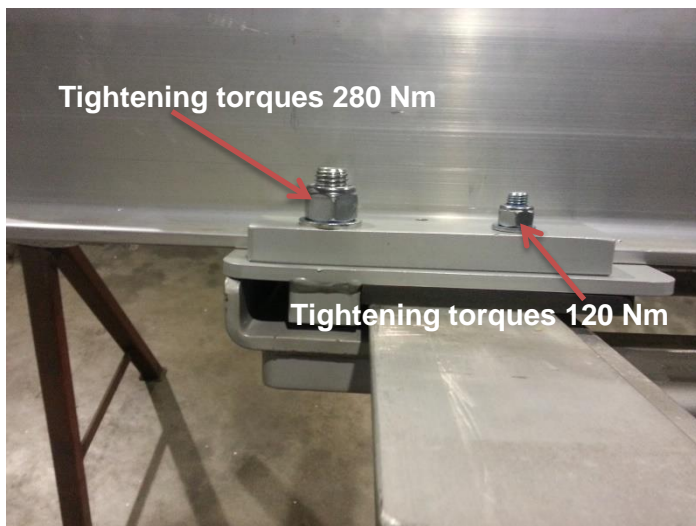


Assembly Instructions

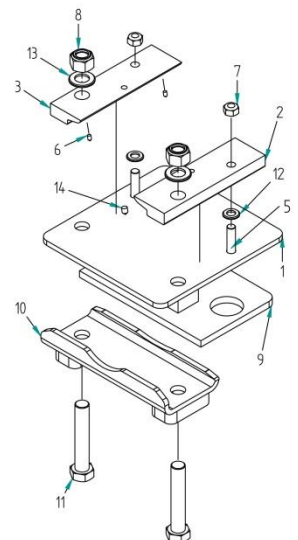
Ecco fix fastening 7/9 with plastic plate EB-2200 and without plastic plate EB-2550



1. Disassemble the fastening and place the base plate (with plastic plate) on the vehicle frame.
2. Place the bunk on the base plate of the fix fastening, move the bunk sideways and mount the clamping claw loosely.
3. Mount the clamp with the screws check the lateral measure of the bunk to the vehicle frame. Tighten the screws with a small impact wrench so that the steel splashes of the clamping claws are pressed into the aluminum bunk and then fastened after tightening torques.



IMPORTANT!!!
 All screws must be inspected and tightened after approximately two weeks of use



Pos.	Dateiname	Menge
10	EB-2020.asm	1
9	EB-2004.par	1
8	M20 VZ DIN985.par	2
11	M20 X 110 DIN931.par	2
14	Zylinderstift 8x15 ISO2338.par	2
13	B21 VZ DIN125.par	2
12	B13 VZ DIN125.par	2
3	EB-2012.par	1
2	EB-2011.par	1
1	EB-2019.asm	1
4*	Fahrzeugrahmenträgerdummy.par	1
7	M12 VZ DIN985.par	2
6	Zylinderstift 5x7 DIN6325.par	4